

# Vehicles: AFVs and HEVs



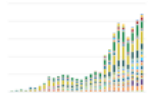
**[AFV Acquisitions by Regulated Fleets \(by Fleet Type\)](/data/10355)**  
 (/data/10355)

Trend of State & Alternative Fuel Provider (S&FP) alternative fuel vehicle (AFV) acquisitions by fleet type from 1992 to 2018 Last update December 2019



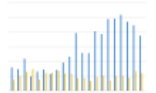
**[AFV Acquisitions by Regulated Fleets \(by Fuel Type\)](/data/10354)**  
 (/data/10354)

Trend of State & Alternative Fuel Provider (S&FP) alternative fuel vehicle (AFV) acquisitions by fuel type from 1992 to 2018 Last update December 2019



**[AFV and HEV Model Offerings, by Manufacturer](/data/10304)**  
 (/data/10304)

Trend of alternative fuel vehicle (AFV) and hybrid electric vehicle (HEV) models produced by manufacturers, 1991-2019 Last update January 2020



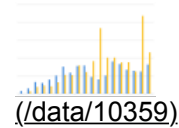
**[Annual Vehicle Credits Earned and Used by Regulated Fleets](/data/10357)**  
 (/data/10357)

Trend of State & Alternative Fuel Provider (S&FP) EPCRA credits traded and transactions from 1998 to 2018 Last update December 2019



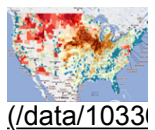
**[Average Range and Efficiency of U.S. Electric Vehicles](/data/10963)**  
 (/data/10963)

Provides driving range and efficiency factors of on-road electric vehicles in the United States in 2017, based on vehicle registration data Last update January 2020



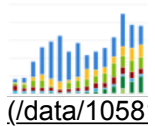
**[Biodiesel Purchases by EPA-Regulated Fleets](/data/10359)**  
 (/data/10359)

Trend of State and Alternative Fuel Provider Biodiesel Purchases from 2000 to 2018 Last update December 2019



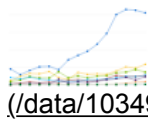
**[BioFuels Atlas](/data/10336)**  
 (/data/10336)

An interactive map for comparing biomass feedstocks and biofuels by location.



**[Clean Cities Alternative Fuel Vehicle Inventory](/data/10581)**  
 (/data/10581)

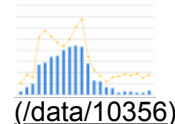
Alternative fuel vehicle inventory reported by Clean Cities coalitions from 2004 to 2018 Last update January 2020



**[Clean Cities Energy Use Impact by Alternative Fuel Vehicle Type](/data/10349)**  
 (/data/10349)

Trend of energy impact by fuels used in alternative fuel vehicles from 2004 to 2018

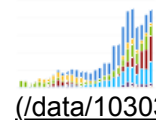
Last update January 2020



**[EPAct State & Alternative Fuel Provider Fleet Exemptions](/data/10356)**

[\(/data/10356\)](/data/10356)

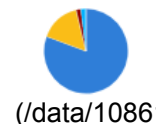
Trend of State & Alternative Fuel Provider (S&FP) exemption requests and vehicles exempted from 1997 to 2018 Last update December 2019



**[Light-Duty AFV, HEV, and Diesel Model Offerings, by Technology/Fuel](/data/10303)**

[\(/data/10303\)](/data/10303)

Trend of vehicle models incorporating various advanced technologies or alternative fuels, from 1991 through 2019 Last update September 2020



**[Light-Duty AFV Registrations](/data/10861)**

[\(/data/10861\)](/data/10861)

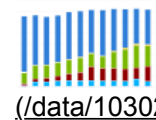
Breakdown of alternative fuel vehicle (AFV) registrations by fuel type Last update August 2020



**[TransAtlas](/data/10364)**

[\(/data/10364\)](/data/10364)

Interactive map displays existing and planned alternative fueling stations, alternative fuel production facilities, light-duty vehicle densities, roads, and political boundaries



**[Transit Buses by Fuel Type](/data/10302)**

[\(/data/10302\)](/data/10302)

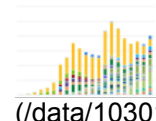
Trend of buses powered by various fuels in the United States, 2007-2018 Last update June 2020



**[Types of Vehicles by Weight Class](/data/10381)**

[\(/data/10381\)](/data/10381)

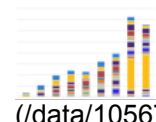
Chart shows typical vehicle types within the Federal Highway Administration (FHWA) vehicle classes Last update June 2012



**[U.S. HEV Sales by Model](/data/10301)**

[\(/data/10301\)](/data/10301)

Trend of sales by hybrid electric vehicle (HEV) model, 1999-2019 Last update January 2020



**[U.S. Plug-in Electric Vehicle Sales by Model](/data/10567)**

[\(/data/10567\)](/data/10567)

Trend of sales by PEV model, 2011-2019 Last update January 2020



**[Vehicle Credits Traded by Regulated Fleets](/data/10358)**

[\(/data/10358\)](/data/10358)

Trend of State & Alternative Fuel Provider (S&FP) EPAAct credits traded and transactions from 1997 to 2018 Last update December 2019

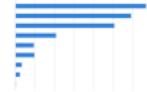


**[Vehicle Weight Classes & Categories](#)**

[\(/data/10380\)](#)

Charts illustrate the vehicle weight classes and categories used by the Federal Highway Administration (FHWA), the U.S. Census Bureau, and the U.S. Environmental Protection Agency (EPA). Last update June 2012

## Vehicles: Fuel Consumption and Efficiency

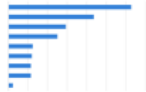


[\(/data/10308\)](#)

### **Average Annual Fuel Use by Vehicle Type**

[\(/data/10308\)](#)

Comparison of fuel use (per vehicle) among vehicle types Last update February 2020



[\(/data/10308\)](#)

### **Average Annual Vehicle Miles Traveled by Major Vehicle Category**

[\(/data/10309\)](#)

Comparison of miles traveled (per vehicle) among vehicle types Last update February 2020

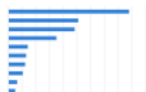


[\(/data/1060\)](#)

### **Average Fuel Consumption at Increasing Road Grades**

[\(/data/10601\)](#)

Trend of fuel consumption at increasing road grades, for various vehicle types Last update August 2014



[\(/data/1031\)](#)

### **Average Fuel Economy by Major Vehicle Category**

[\(/data/10310\)](#)

Comparison of fuel economy among vehicle types Last update February 2020



[\(/data/1031\)](#)

### **Average Per-Passenger Fuel Economy by Travel Mode**

[\(/data/10311\)](#)

Comparison of per-passenger fuel economy for various modes of transportation. Last update May 2020



[\(/data/1096\)](#)

### **Average Range and Efficiency of U.S. Electric Vehicles**

[\(/data/10963\)](#)

Provides driving range and efficiency factors of on-road electric vehicles in the United States in 2017, based on vehicle registration data Last update January 2020